



LIQUID CONTROLS®

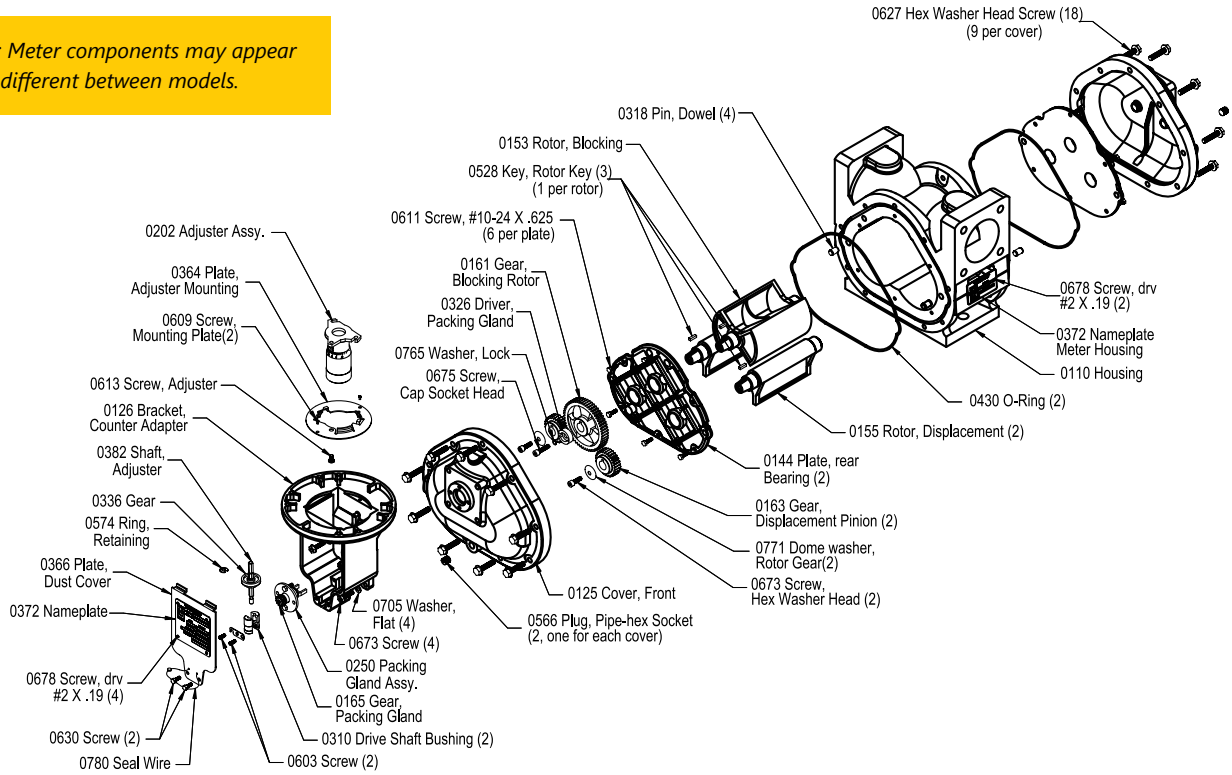
Part Reference Guide

CLASS 1 METERS FOR REFINED PETROLEUM PRODUCTS
CLASS 2 FOR AVIATION FUELS
CLASS 10 METERS FOR LIQUEFIED PETROLEUM GAS [LPG]
CLASS 16 METERS FOR ALTERNATIVE FUELS
CLASS 18 METERS FOR DIESEL EXHAUST FLUID

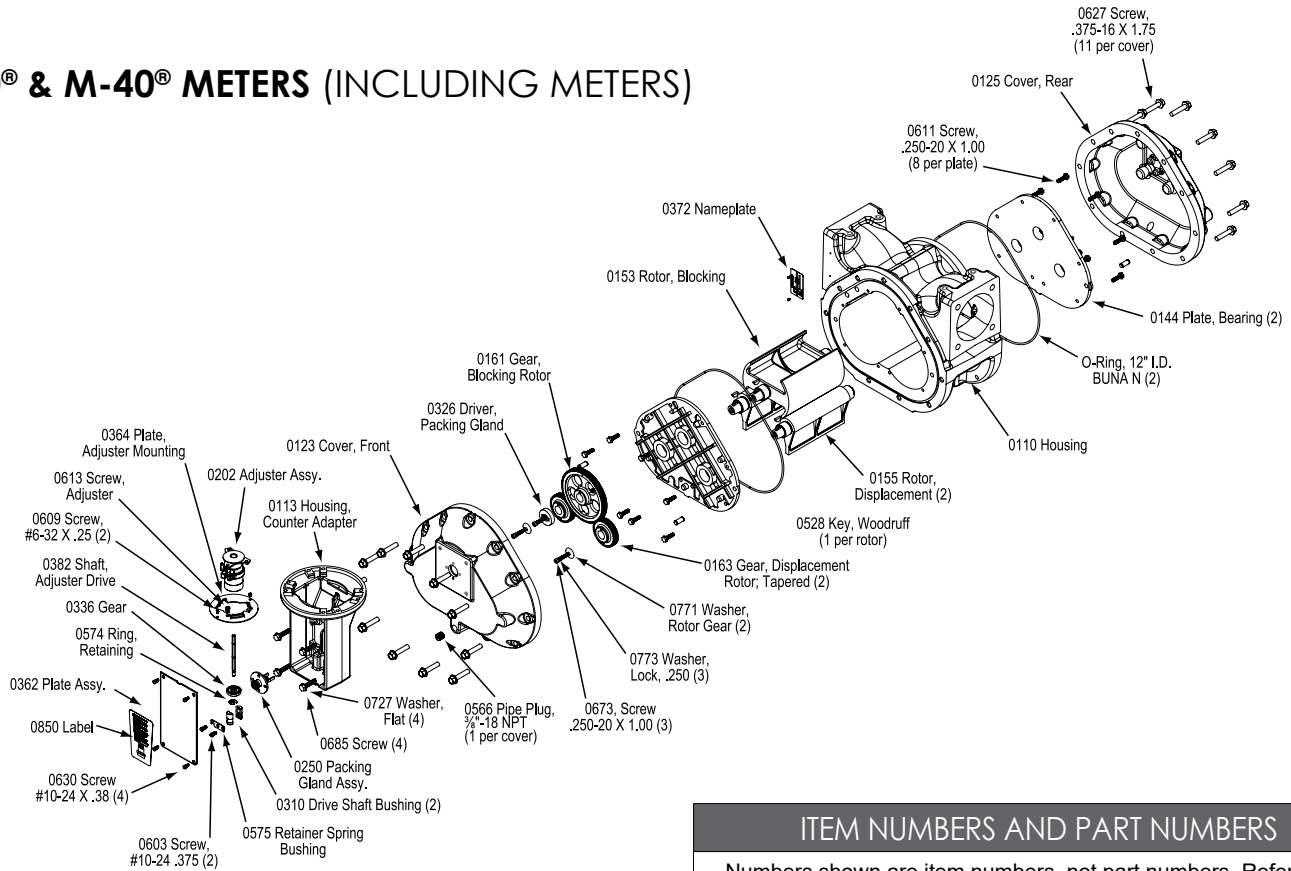


M-5® THROUGH M-25® METERS (INCLUDING MA-SERIES METERS)

NOTE: Meter components may appear different between models.



M-30® & M-40® METERS (INCLUDING METERS)



ITEM NUMBERS AND PART NUMBERS
Numbers shown are item numbers, not part numbers. Refer to the Bill of Materials M610 supplied in the



TABLE OF CONTENTS

METER PARTS LIST BY METER SIZE

M-7[®] 4-5
M-10[®] 6-7
M-15[®] 8-9
M-25[®] 10-11
M-30[®] 12-13
M-40[®] 14-15

METER HARDWARE KIT CROSS REFERENCE

MA-4[®] / MA-5[®] 16
M-5[®] 16
MA-7[®] 17
M-7[®] / M-10[®] 17
MA-15[®] 18
M-15[®] / M-25[®] 18
M-30[®] / M-40[®] 19
M-60[®] / M-80[®] 19

SEAL KIT CROSS REFERENCE

MA-4[®] / MA-5[®] / M-5[®] 20
MA-7[®] / M-7[®] / M-10[®] 20
MA-15[®] / M-15[®] / M-25[®] 21
M-30[®] / M-40[®] 22
M-60[®] 22
M-80[®] 23

DRIVE SHAFT KIT CROSS REFERENCE

MA-4[®] - M-25[®] 24
M-30[®] / M-40[®] 24
M-60[®] / M-80[®] 24
M-15[®] / M-30[®] / M-60[®] (Class 14) 25
MS/MSAA-7[®] / MS/MSAA-30[®] / MS/MSAA-40[®] 25
MS/MSAA-75[®] / MS/MSAA-120[®] 26
MS/MSAA-7[®] / MS/MSAA-30[®] / MS/MSAA-40[®] (Class 14) 26
MS/MSAA-75[®] / MS/MSAA-120[®] (Class 14) 26

BEARING PLATE HARDWARE CROSS REFERENCE

M-5[®]-M-25[®], MA-4[®]-MA-15[®], MS/MSAA-7[®], MS/MSAA-15[®] 27
M-30[®], M-40[®], MS/MSAA-30[®], MS/MSAA-40[®] 27
M-60[®], M-80[®], MS/MSAA-75[®], MS/MSAA-120[®] 27

AIR ELIMINATOR CROSS REFERENCE

. 27



M-7® SERIES

		Class 1	Class 2	Class 10	Class 16	Class 18	
Replacement Parts for Elements							
Item #	Description	Part Number					
110	Housing	M7R1-B* or M7R1-V*	M7R2-B* or M7R2-V*	MA7R10-B*	M7R16-B* or M7R16-V* or M7R16-T*	M7R18-E*	
144	Bearing Plate	41804	41804	47668			
153	Blocking Rotor	48750	48742	48750			
161	Blocking Rotor Gear						
155	Displacement Rotor	48751	48743	48751			
163	Displacement Rotor Gear						
318	Dowel Pin	M7R1-B* or M7R1-V*	M7R2-B* or M7R2-V*	MA7R10-B*	M7R16-B* or M7R16-V* or M7R16-T*		
326	Packing Gland Driver	See Packing Gland Options Below					
528	Rotor Key	See Rotor and Gear Kits Above					M7R18-E*
611	Bearing Plate Screw	501325					
673	Displacement Gear Screw	See Rotor and Gear Kits Above					
771	Displacement Gear Washer						
675	Packing Gland Drive Screw	See Packing Gland Options Below					
765	Packing Gland Drive Lock Washer						
372	Nameplate Tag	49444					
678	Nameplate Tag Drive Screws	00306					
Cover Seals							
Item #	Description	Part Number					
430	Cover O-ring - Buna-N	501315					N/A
463	Packing Gland O-ring - Buna-N						
430	Cover O-ring - Viton	501316	N/A	501316			
463	Packing Gland O-ring - Viton						
430	Cover O-ring - PTFE	501317	N/A	501317			
463	Packing Gland O-ring - PTFE						
430	Cover O-ring - EPDM	N/A					09448
463	Packing Gland O-ring - EPDM						49618
End Covers							
Item #	Description	Part Number					
123	Front Cover	501632					49578
125	Rear Cover	501633					49577
566	Pipe Plug	06790					
627	Cover Screws	501649					L2700
Adjuster							
Item #	Description	Part Number					
202	Standard Adjuster Assembly	49403					N/A
	High Temperature Adjuster Assembly	49405					
Packing Gland Options							
Item #	Description	Part Number					
250	Packing Gland - Standard Buna	48616	49561	49561	48616	N/A	
	Packing Gland - Optional Viton	48617	501488	N/A	48617		
	Packing Gland - Optional PTFE	48618	N/A		48618		
	Packing Gland - Standard EPDM	N/A					49618
165	Packing Gland Gear 1:1	See Packing Gland Options					
	Packing Gland Gear 2:1	See Packing Gland Options					

* -B for Buna Seals, -E for EPDM Seals, -T for PTFE Seals, -V for Viton Seals



M-7® SERIES CON'T.

		Class 1	Class 2	Class 10	Class 16	Class 18	
Face Gear Options							
Item #	Description	Part Number					
336	Standard 2:1 Face Gear - Delrin	501664					
	Standard 1:1 Face Gear - Delrin						
	Optional 2:1 Face Gear SS	501667					
	Optional 1:1 Face Gear SS						
Drive Shaft							
Item #	Description	Part Number					
382	Adjuster Shaft	501664					501665
310	Drive Shaft Bushing						
574	Retaining Ring						
Dust Cover							
Item #	Description	Part Number					
366	Adjuster Cover Plate	49390				N/A	
630	Cover Plate Screws	501325					
780	Seal Wire Kit	501649					
Counter Assembly Adaptor							
Item #	Description	Part Number					
126	Counter Bracket - Painted Yellow	501343				N/A	
	Counter Bracket - Bare Aluminum	49582					
375	Bushing Retaining Spring	501664					
603	Retaining Spring Screw	501664					
673	Counter Bracket Screw	501649					
705	Counter Bracket Washer	501325					



M-10[®] SERIES

		Class 1	Class 2
Meter Element L2801 (Class 1), L2802 (Class 2)			
Item #	Description	Part Number	
110	Housing	M10R1-B* or M10R1-V* MD10R1-B** or MD10R1-V** MR10R1-B** or MR10R1-V**	M10R2-B* or M10R2-V* MR10R2-B** or MR10R2-V**
144	Bearing Plate	47668	
153	Blocking Rotor	501331	501332
161	Blocking Rotor Gear		
155	Displacement Rotor	501333	501334
163	Displacement Rotor Gear		
318	Dowel Pin	M10R1-B* or M10R1-V* MD10R1-B** or MD10R1-V** MR10R1-B** or MR10R1-V**	M10R2-B* or M10R2-V* MR10R2-B** or MR10R2-V**
326	Packing Gland Driver	See Packing Gland Options	
528	Rotor Key	See Rotor and Gear Kits	
611	Bearing Plate Screw	501325	
673	Displacement Gear Screw	See Rotor and Gear Kits	
771	Displacement Gear Washer		
675	Packing Gland Drive Screw	See Packing Gland Options	
765	Packing Gland Drive Lock Washer		
372	Nameplate Tag	49444	
678	Nameplate Tag Drive Screws	00306	
Cover Seals			
Item #	Description	Part Number	
430	Cover O-ring - Buna-N	501315	
463	Packing Gland O-ring - Buna-N		
430	Cover O-ring - Viton	501316	
463	Packing Gland O-ring - Viton		
430	Cover O-ring - PTFE	501317	
463	Packing Gland O-ring - PTFE		
End Covers			
Item #	Description	Part Number	
123	Front Cover	501632	
125	Rear Cover	501633	
566	Pipe Plug	06790	
627	Cover Screws	501649	
Adjuster			
Item #	Description	Part Number	
202	Standard Adjuster Assembly	49403	
	High Temperature Adjuster Assembly	49405	
Packing Gland Options			
Item #	Description	Part Number	
250	Packing Gland - Standard Buna	48616	
	Packing Gland - Optional Viton	48617	
	Packing Gland - Optional PTFE	48618	
165	Packing Gland Gear 1:1	See Packing Gland Options	
	Packing Gland Gear 2:1	See Packing Gland Options	

* -B for Buna Seals, -E for EPDM Seals, -T for PTFE Seals, -V for Viton Seals

** MD/MR Options are for Canada



M-10® SERIES CON'T.

		Class 1	Class 2
Face Gear Options			
Item #	Description	Part Number	
336	Standard 2:1 Face Gear - Delrin	501664	
	Standard 1:1 Face Gear - Delrin		
	Optional 2:1 Face Gear SS	501667	
	Optional 1:1 Face Gear SS		
Drive Shaft			
Item #	Description	Part Number	
382	Adjuster Shaft	501664	
310	Drive Shaft Bushing		
574	Retaining Ring		
Dust Cover			
Item #	Description	Part Number	
366	Adjuster Cover Plate	49390	
630	Cover Plate Screws	501325	
780	Seal Wire Kit	501649	
Counter Assembly Adaptor			
Item #	Description	Part Number	
126	Counter Bracket - Painted Yellow	501343	
	Counter Bracket - Bare Aluminum	49582	
375	Bushing Retaining Spring	501664	
603	Retaining Spring Screw	501664	
673	Counter Bracket Screw	501649	
705	Counter Bracket Washer	501325	



M-15[®] SERIES

		Class 1	Class 2	Class 10	Class 16
Meter Element L3161 (Class 1), L3162 (Class 2), L3210 (Class 10), L3167 (Class 16)					
Item #	Description	Part Number			
110	Housing	M15R1-B* or M15R1-V*	M15R2-B* or M15R2-V*	MA15R10-B*	M15R16-B* or M15R16-V* or M15R16-T*
144	Bearing Plate	46732		49420	47676
153	Blocking Rotor	48773	48775	48773	
161	Blocking Rotor Gear				
155	Displacement Rotor	48774	48776	48774	
163	Displacement Rotor Gear				
318	Dowel Pin	M15R1-B* or M15R1-V*	M15R2-B* or M15R2-V*	MA15R10-B*	M15R16-B* or M15R16-V* or M15R16-T*
326	Packing Gland Driver	See Packing Gland Options Below			
528	Rotor Key	See Rotor and Gear Kits Above			
611	Bearing Plate Screw	501326			
673	Displacement Gear Screw	See Rotor and Gear Kits Above			
771	Displacement Gear Washer				
675	Packing Gland Drive Screw	See Packing Gland Options Below			
765	Packing Gland Drive Lock Washer				
372	Nameplate Tag	49444			
678	Nameplate Tag Drive Screws	00306			
Cover Seals					
Item #	Description	Part Number			
430	Cover O-ring - Buna-N	501318			
463	Packing Gland O-ring - Buna-N				
430	Cover O-ring - Viton	501319	N/A	501319	
463	Packing Gland O-ring - Viton				
430	Cover O-ring - PTFE	501320	N/A	501320	
463	Packing Gland O-ring - PTFE				
End Covers					
Item #	Description	Part Number			
123	Front Cover	501033		48915	501033
125	Rear Cover	501034		48916	501034
566	Pipe Plug	501143		N/A	501143
627	Cover Screws	06790			
Adjuster					
Item #	Description	Part Number			
202	Standard Adjuster Assembly	49403			
	High Temperature Adjuster Assembly	49405			
Packing Gland Options					
Item #	Description	Part Number			
250	Packing Gland - Standard Buna	48616		49561	48616
	Packing Gland - Optional Viton	48617	501488	N/A	48617
	Packing Gland - Optional PTFE	48618	N/A		48618
	Packing Gland - Standard EPDM	N/A			
165	Packing Gland Gear 1:1	See Packing Gland Options			
	Packing Gland Gear 2:1	See Packing Gland Options			

* -B for Buna Seals, -E for EPDM Seals, -T for PTFE Seals, -V for Viton Seals



M-15® SERIES CON'T.

		Class 1	Class 2	Class 10	Class 16
Face Gear Options					
Item #	Description	Part Number			
336	Standard 2:1 Face Gear - Delrin	501664			
	Standard 1:1 Face Gear - Delrin				
	Optional 2:1 Face Gear SS	501667			
	Optional 1:1 Face Gear SS				
Drive Shaft					
Item #	Description	Part Number			
382	Adjuster Shaft	501664			
310	Drive Shaft Bushing				
574	Retaining Ring				
Dust Cover					
Item #	Description	Part Number			
366	Adjuster Cover Plate	49390			
630	Cover Plate Screws	501325			
780	Seal Wire Kit	501649			
Counter Assembly Adaptor					
Item #	Description	Part Number			
126	Counter Bracket - Painted Yellow	501343			
	Counter Bracket - Bare Aluminum	49582			
375	Bushing Retaining Spring	501664			
603	Retaining Spring Screw	501664			
673	Counter Bracket Screw	501326			
705	Counter Bracket Washer	501326			



M-25[®] SERIES

		Class 1	Class 2
Meter Element L3255 (Class 1), L3252 (Class 2)			
Item #	Description	Part Number	
110	Housing	M25R1-B* or M25R1-V* M25R2-1PC-B** or M25R2-1PC-V**	M25R2-B* or M25R2-V* M25R2-2PC-B** or M25R2-2PC-V**
144	Bearing Plate	47676	
153	Blocking Rotor	48773	48775
161	Blocking Rotor Gear		
155	Displacement Rotor	48774	48776
163	Displacement Rotor Gear		
318	Dowel Pin	M25R1-B* or M25R1-V* M25R2-1PC-B** or M25R2-1PC-V**	M25R2-B* or M25R2-V* M25R2-2PC-B** or M25R2-2PC-V**
326	Packing Gland Driver	See Packing Gland Options	
528	Rotor Key	See Rotor and Gear Kits	
611	Bearing Plate Screw	501325	
673	Displacement Gear Screw	See Rotor and Gear Kits	
771	Displacement Gear Washer		
675	Packing Gland Drive Screw	See Packing Gland Options	
765	Packing Gland Drive Lock Washer		
372	Nameplate Tag	49444	
678	Nameplate Tag Drive Screws	00306	
Cover Seals			
Item #	Description	Part Number	
430	Cover O-ring - Buna-N	501318	
463	Packing Gland O-ring - Buna-N		
430	Cover O-ring - Viton	501319	
463	Packing Gland O-ring - Viton		
430	Cover O-ring - PTFE	501320	
463	Packing Gland O-ring - PTFE		
End Covers			
Item #	Description	Part Number	
123	Front Cover	501033	
125	Rear Cover	501034	
	Rear Cover With POD	501143	
566	Pipe Plug	06790	
627	Cover Screws	501326	
Adjuster			
Item #	Description	Part Number	
202	Standard Adjuster Assembly	49403	
	High Temperature Adjuster Assembly	49405	
Packing Gland Options			
Item #	Description	Part Number	
250	Packing Gland - Standard Buna	48616	49561
	Packing Gland - Optional Viton	48617	501488
	Packing Gland - Optional PTFE	48618	N/A
165	Packing Gland Gear 1:1	See Packing Gland Options	
	Packing Gland Gear 2:1	See Packing Gland Options	

* -B for Buna Seals, -E for EPDM Seals, -T for PTFE Seals, -V for Viton Seals



M-25® SERIES CON'T.

		Class 1	Class 2
Face Gear Options			
Item #	Description	Part Number	
336	Standard 2:1 Face Gear - Delrin	501664	
	Standard 1:1 Face Gear - Delrin		
	Optional 2:1 Face Gear SS	501667	
	Optional 1:1 Face Gear SS		
Drive Shaft			
Item #	Description	Part Number	
382	Adjuster Shaft	501664	
310	Drive Shaft Bushing		
574	Retaining Ring		
Dust Cover			
Item #	Description	Part Number	
366	Adjuster Cover Plate	49390	
630	Cover Plate Screws	501325	
780	Seal Wire Kit	501649	
Counter Assembly Adaptor			
Item #	Description	Part Number	
126	Counter Bracket - Painted Yellow	501343	
	Counter Bracket - Bare Aluminum	49582	
375	Bushing Retaining Spring	501664	
603	Retaining Spring Screw	501664	
673	Counter Bracket Screw	501326	
705	Counter Bracket Washer	501326	



M-30® SERIES

		Class 1	Class 2	Class 16
Meter Element L3403 (Class 1), L3426 (Class 2), L3467 (Class 16)				
Item #	Description	Part Number		
110	Housing	M30R1-B* or M30R1-V*	M30R2-B* or M30R2-V*	M30R16-B* or M30R16-V* or M30R16-T*
144	Bearing Plate	44102		44117
153	Blocking Rotor	48792	48794	48792
161	Blocking Rotor Gear			
155	Displacement Rotor	48793	48795	48793
163	Displacement Rotor Gear			
318	Dowel Pin	M30R1-B* or M30R1-V*	M30R2-B* or M30R2-V*	M30R16-B* or M30R16-V* or M30R16-T*
326	Packing Gland Driver	See Packing Gland Options Below		
528	Rotor Key	See Rotor and Gear Kits Above		
611	Bearing Plate Screw	501327		
673	Displacement Gear Screw	See Rotor and Gear Kits Above		
771	Displacement Gear Washer			
675	Packing Gland Drive Screw	See Packing Gland Options Below		
765	Packing Gland Drive Lock Washer			
372	Nameplate Tag	49444		
678	Nameplate Tag Drive Screws	00306		
Cover Seals				
Item #	Description	Part Number		
430	Cover O-ring - Buna-N	501321		
463	Packing Gland O-ring - Buna-N			
430	Cover O-ring - Viton	501322		
463	Packing Gland O-ring - Viton			
430	Cover O-ring - PTFE	501323		
463	Packing Gland O-ring - PTFE			
End Covers				
Item #	Description	Part Number		
123	Front Cover	501144		
125	Rear Cover	501183		
566	Pipe Plug	04759		
627	Cover Screws	501327		
Adjuster				
Item #	Description	Part Number		
202	Standard Adjuster Assembly	49403		
	High Temperature Adjuster Assembly	49405		
Packing Gland Options				
Item #	Description	Part Number		
250	Packing Gland - Standard Buna	48616	49561	48616
	Packing Gland - Optional Viton	48617	501488	48617
	Packing Gland - Optional PTFE	48618	N/A	48618
	Packing Gland - Standard EPDM	N/A		
165	Packing Gland Gear 1:1	See Packing Gland Options		
	Packing Gland Gear 2:1	See Packing Gland Options		

* -B for Buna Seals, -E for EPDM Seals, -T for PTFE Seals, -V for Viton Seals



M-30® SERIES CON'T.

		Class 1	Class 2	Class 16
Face Gear Options				
Item #	Description	Part Number		
336	Standard 2:1 Face Gear - Delrin	501664		
	Standard 1:1 Face Gear - Delrin			
	Optional 2:1 Face Gear SS	501667		
	Optional 1:1 Face Gear SS			
Drive Shaft				
Item #	Description	Part Number		
382	Adjuster Shaft	501669		
310	Drive Shaft Bushing			
574	Retaining Ring			
Dust Cover				
Item #	Description	Part Number		
366	Adjuster Cover Plate	N/A		
630	Cover Plate Screws			
780	Seal Wire Kit			
Counter Assembly Adaptor				
Item #	Description	Part Number		
113	Counter Bracket - Painted Yellow	N/A		
	Counter Bracket - Bare Aluminum			
575	Bushing Retaining Spring	501666		
603	Retaining Spring Screw	501651		
685	Counter Bracket Screw			
727	Counter Bracket Washer			



M-40® SERIES

		Class 1	Class 2
Meter Element L3477 (Class 1), L3484 (Class 2)			
Item #	Description	Part Number	
110	Housing	M40R1-B* or M40R1-V*	M40R2-B* or M40R2-V*
144	Bearing Plate	44117	
153	Blocking Rotor	501335	501336
161	Blocking Rotor Gear		
155	Displacement Rotor	501337	501338
163	Displacement Rotor Gear		
318	Dowel Pin	M40R1-B* or M40R1-V*	M40R2-B* or M40R2-V*
326	Packing Gland Driver	See Packing Gland Options	
528	Rotor Key	See Rotor and Gear Kits	
611	Bearing Plate Screw	501327	
673	Displacement Gear Screw	See Rotor and Gear Kits	
771	Displacement Gear Washer		
675	Packing Gland Drive Screw	See Packing Gland Options	
765	Packing Gland Drive Lock Washer		
372	Nameplate Tag	49444	
678	Nameplate Tag Drive Screws	00306	
Cover Seals			
Item #	Description	Part Number	
430	Cover O-ring - Buna-N	501321	
463	Packing Gland O-ring - Buna-N		
430	Cover O-ring - Viton	501322	
463	Packing Gland O-ring - Viton		
430	Cover O-ring - PTFE	501323	
463	Packing Gland O-ring - PTFE		
End Covers			
Item #	Description	Part Number	
123	Front Cover	501144	
125	Rear Cover	501183	
566	Pipe Plug	04759	
627	Cover Screws	501327	
Adjuster			
Item #	Description	Part Number	
202	Standard Adjuster Assembly	49403	
	High Temperature Adjuster Assembly	49405	
Packing Gland Options			
Item #	Description	Part Number	
250	Packing Gland - Standard Buna	48616	49561
	Packing Gland - Optional Viton	48617	501488
	Packing Gland - Optional PTFE	48618	N/A
165	Packing Gland Gear 1:1	See Packing Gland Options	
	Packing Gland Gear 2:1	See Packing Gland Options	

* -B for Buna Seals, -E for EPDM Seals, -T for PTFE Seals, -V for Viton Seals



M-40® SERIES CON'T.

		Class 1	Class 2
Face Gear Options			
Item #	Description	Part Number	
336	Standard 2:1 Face Gear - Delrin	501664	
	Standard 1:1 Face Gear - Delrin		
	Optional 2:1 Face Gear SS	501667	
	Optional 1:1 Face Gear SS		
Drive Shaft			
Item #	Description	Part Number	
382	Adjuster Shaft	501669	
310	Drive Shaft Bushing		
574	Retaining Ring		
Dust Cover			
Item #	Description	Part Number	
366	Adjuster Cover Plate	N/A	
630	Cover Plate Screws		
780	Seal Wire Kit		
Counter Assembly Adaptor			
Item #	Description	Part Number	
113	Counter Bracket - Painted Yellow	N/A	
	Counter Bracket - Bare Aluminum		
575	Bushing Retaining Spring	501666	
603	Retaining Spring Screw	501651	
685	Counter Bracket Screw		
727	Counter Bracket Washer		



MA4 / MA5

KIT NUMBER 501653

Includes the following items: Hardware Kit, MA4/MA5 Meter, For Covers, Ctr/LCR Bracket, PG and POD

Quantity	Part Number	Description	Where Used
18	09080	Screw, .312-18 x 1.375; Taptite, Wshr Hd, Gr 5.1	Cover Screws
4	09084	Screw, .250-20 x 1.00; Taptite, Wshr Hd, Gr 8, Cad	Ctr Adapter Screws
2	09079	Screw, #10-24 x .625; Taptite w/SEMS, 304 SS	Bushing Screws
4	09027	Screw, .250-20 x 0.750; 18-8 SS	LCR Bracket Screws
4	06081	Lock Washer, .25; Cad Pltd	LCR Bracket Washers
4	09252	Screw, .250-20 x 0.750; 316 SS	LCR Bracket to LCR
2	07405	Screw, .250-20 x 1.00; 316 SS	Counter Adapter to LCR
2	08135	Screw, .250-20 x 1.00; Drilled Hd, 18-8 SS	Counter Adapter to LCR
1	48864	Seal Wire Kit	Counter Adapter to LCR
2	09079	Screw, #10-24 x .625; Taptite w/SEMS, 304 SS	Packing Gland
1	09079	Screw, #10-24 x .625; Taptite w/SEMS, 304 SS	POD
1	40107	Screw, 09079 w/Drilled Head	POD
1	48864	Seal Wire Kit	POD

M5

KIT NUMBER 501648

Includes the following items: Hardware Kit, M5 Meter, For Covers, Ctr/LCR Bracket, PG and POD

Quantity	Part Number	Description	Where Used
18	09080	Screw, .312-18 x 1.375; Taptite, Wshr Hd, Gr 5.1	Cover Screws
4	09084	Screw, .250-20 x 1.00; Taptite, Wshr Hd, Gr 8, Cad	Ctr Adapter Screws
2	09079	Screw, #10-24 x .625; Taptite w/SEMS, 304 SS	Bushing Screws
4	09027	Screw, .250-20 x 0.750; 18-8 SS	LCR Bracket Screws
4	06081	Lock Washer, .25; Cad Pltd	LCR Bracket Washers
4	09252	Screw, .250-20 x 0.750; 316 SS	LCR Bracket to LCR
2	07405	Screw, .250-20 x 1.00; 316 SS	Counter Adapter to LCR
2	08135	Screw, .250-20 x 1.00; Drilled Hd, 18-8 SS	Counter Adapter to LCR
1	48864	Seal Wire Kit	Counter Adapter to LCR
2	09079	Screw, #10-24 x .625; Taptite w/SEMS, 304 SS	Packing Gland
1	09079	Screw, #10-24 x .625; Taptite w/SEMS, 304 SS	POD
1	40107	Screw, 09079 w/Drilled Head	POD
1	48864	Seal Wire Kit	POD



MA7

KIT NUMBER 501654

Includes the following items: Hardware Kit, MA7 Meter, For Covers, Ctr/LCR Bracket, PG and POD

Quantity	Part Number	Description	Where Used
20	09080	Screw, .312-18 x 1.375; Taptite, Wshr Hd, Gr 5.1	Cover Screws
4	09084	Screw, .250-20 x 1.00; Taptite, Wshr Hd, Gr 8, Cad	Ctr Adapter Screws
2	09079	Screw, #10-24 x .625; Taptite w/SEMS, 304 SS	Bushing Screws
4	09027	Screw, .250-20 x 0.750; 18-8 SS	LCR Bracket Screws
4	06081	Lock Washer, .25; Cad Pltd	LCR Bracket Washers
4	09252	Screw, .250-20 x 0.750; 316 SS	LCR Bracket to LCR
2	07405	Screw, .250-20 x 1.00; 316 SS	Counter Adapter to LCR
2	08135	Screw, .250-20 x 1.00; Drilled Hd, 18-8 SS	Counter Adapter to LCR
1	48864	Seal Wire Kit	Counter Adapter to LCR
2	09079	Screw, #10-24 x .625; Taptite w/SEMS, 304 SS	Packing Gland
1	09079	Screw, #10-24 x .625; Taptite w/SEMS, 304 SS	POD
1	40107	Screw, 09079 w/Drilled Head	POD
1	48864	Seal Wire Kit	POD

M7 / M10

KIT NUMBER 501649

Includes the following items: Hardware Kit, M7 / M10 Meter, For Covers, Ctr/LCR Bracket, PG and POD

Quantity	Part Number	Description	Where Used
20	09080	Screw, .312-18 x 1.375; Taptite, Wshr Hd, Gr 5.1	Cover Screws
4	09084	Screw, .250-20 x 1.00; Taptite, Wshr Hd, Gr 8, Cad	Ctr Adapter Screws
2	09079	Screw, #10-24 x .625; Taptite w/SEMS, 304 SS	Bushing Screws
4	09027	Screw, .250-20 x 0.750; 18-8 SS	LCR Bracket Screws
4	06081	Lock Washer, .25; Cad Pltd	LCR Bracket Washers
4	09252	Screw, .250-20 x 0.750; 316 SS	LCR Bracket to LCR
2	07405	Screw, .250-20 x 1.00; 316 SS	Counter Adapter to LCR
2	08135	Screw, .250-20 x 1.00; Drilled Hd, 18-8 SS	Counter Adapter to LCR
1	48864	Seal Wire Kit	Counter Adapter to LCR
2	09079	Screw, #10-24 x .625; Taptite w/SEMS, 304 SS	Packing Gland
1	09079	Screw, #10-24 x .625; Taptite w/SEMS, 304 SS	POD
1	40107	Screw, 09079 w/Drilled Head	POD
1	48864	Seal Wire Kit	POD



MA15

KIT NUMBER 501655

Includes the following items: Hardware Kit, MA15 Meter, For Covers, Ctr/LCR Bracket, PG and POD

Quantity	Part Number	Description	Where Used
28	09405	Screw, .312-18 x 1.375; Taptite, Wshr Hd, Gr 5.1	Cover Screws
4	09084	Screw, .250-20 x 1.00; Taptite, Wshr Hd, Gr 8, Cad	Ctr Adapter Screws
2	09079	Screw, #10-24 x .625; Taptite w/SEMS, 304 SS	Bushing Screws
4	09027	Screw, .250-20 x 0.750; 18-8 SS	LCR Bracket Screws
4	06081	Lock Washer, .25; Cad Pltd	LCR Bracket Washers
4	09252	Screw, .250-20 x 0.750; 316 SS	LCR Bracket to LCR
2	07405	Screw, .250-20 x 1.00; 316 SS	Counter Adapter to LCR
2	08135	Screw, .250-20 x 1.00; Drilled Hd, 18-8 SS	Counter Adapter to LCR
1	48864	Seal Wire Kit	Counter Adapter to LCR
2	09079	Screw, #10-24 x .625; Taptite w/SEMS, 304 SS	Packing Gland
1	09079	Screw, #10-24 x .625; Taptite w/SEMS, 304 SS	POD
1	40107	Screw, 09079 w/Drilled Head	POD
1	48864	Seal Wire Kit	POD

M15 / M25

KIT NUMBER 501655

Includes the following items: Hardware Kit, M15/M25 Meter, For Covers, Ctr/LCR Bracket, PG and POD

Quantity	Part Number	Description	Where Used
18	09080	Screw, .312-18 x 1.375; Taptite, Wshr Hd, Gr 5.1	Cover Screws
4	09084	Screw, .250-20 x 1.00; Taptite, Wshr Hd, Gr 8, Cad	Ctr Adapter Screws
2	09079	Screw, #10-24 x .625; Taptite w/SEMS, 304 SS	Bushing Screws
4	09027	Screw, .250-20 x 0.750; 18-8 SS	LCR Bracket Screws
4	06081	Lock Washer, .25; Cad Pltd	LCR Bracket Washers
4	09252	Screw, .250-20 x 0.750; 316 SS	LCR Bracket to LCR
2	07405	Screw, .250-20 x 1.00; 316 SS	Counter Adapter to LCR
2	08135	Screw, .250-20 x 1.00; Drilled Hd, 18-8 SS	Counter Adapter to LCR
1	48864	Seal Wire Kit	Counter Adapter to LCR
2	09079	Screw, #10-24 x .625; Taptite w/SEMS, 304 SS	Packing Gland
1	09079	Screw, #10-24 x .625; Taptite w/SEMS, 304 SS	POD
1	40107	Screw, 09079 w/Drilled Head	POD
1	48864	Seal Wire Kit	POD



M30 / M40

KIT NUMBER 501651

Includes the following items: Hardware Kit, M30/M40 Meter, For Covers, Ctr/LCR Bracket, PG and POD

Quantity	Part Number	Description	Where Used
22	09085	Screw, .375-16 x 1.75; Taptite, Wshr Hd, Gr 5.1	Cover Screws
4	01127	Screw, .250-20 x 1.00; Taptite, Wshr Hd, Gr 8, Cad	Ctr Adapter Screws
4	06019	Lock Washer, .31; Zinc Pltd	
2	06845	Screw, #10-24 x 0.375; Flstr Hd, 316 SS	Bushing Screws
4	06788	Screw, .312-18 x 0.750; Hex Hd, Gr 5, Zinc Pltd	LCR Bracket Screws
4	06019	Lock Washer, .31; Zinc Pltd	LCR Bracket Washers
4	09252	Screw, .250-20 x 0.750; 316 SS	LCR Bracket to LCR
4	06081	Lock Washer, .25; Cad Pltd	
2	07405	Screw, .250-20 x 1.00; 316 SS	Counter Adapter to LCR
2	08135	Screw, .250-20 x 1.00; Drilled Hd, 18-8 SS	Counter Adapter to LCR
1	48864	Seal Wire Kit	Counter Adapter to LCR
2	09079	Screw, #10-24 x .625; Taptite w/SEMS, 304 SS	Packing Gland
1	09079	Screw, #10-24 x .625; Taptite w/SEMS, 304 SS	POD
1	40107	Screw, 09079 w/Drilled Head	POD
1	48864	Seal Wire Kit	POD

M60 / M80

KIT NUMBER 501652

Includes the following items: Hardware Kit, M15/M25 Meter, For Covers, Ctr/LCR Bracket, PG and POD

Quantity	Part Number	Description	Where Used
48	09086	Screw, .500-13 x 2.50; Taptite, Wshr Hd, Gr 5.2	Cover Screws
4	01127	Screw, .250-20 x 1.00; Taptite, Wshr Hd, Gr 8, Cad	Ctr Adapter Screws
4	06019	Lock Washer, .31; Zinc Pltd	
2	06845	Screw, #10-24 x 0.375; Flstr Hd, 316 SS	Bushing Screws
4	06788	Screw, .312-18 x 0.750; Hex Hd, Gr 5, Zinc Pltd	LCR Bracket Screws
4	06019	Lock Washer, .31; Zinc Pltd	LCR Bracket Washers
4	09252	Screw, .250-20 x 0.750; 316 SS	LCR Bracket to LCR
4	06081	Lock Washer, .25; Cad Pltd	
2	09079	Screw, #10-24 x .625; Taptite w/SEMS, 304 SS	Packing Gland
1	09079	Screw, #10-24 x .625; Taptite w/SEMS, 304 SS	POD
1	40107	Screw, 09079 w/Drilled Head	POD
1	48864	Seal Wire Kit	POD
1	48864	Seal Wire Kit	POD



MA4 / MA5 / M5

Includes the following items:

Kit Number	Description	Quantity	Part Number	Description 1	Description 2
501312	MA4 / MA5, Buna-N Seal Kit	2	09123	O-RING, 5.25 ID BUNA-N UL (COVERS)	O-RING, 5.25 ID BUNA-N UL
		1	06856	O-RING, .88 ID BUNA-N; UL (PG)	O-RING, .88 ID BUNA-N; UL
		3	06854	O-RING, 2.88 ID BUNA-N UL (FLGS)	O-RING, 2.88 ID BUNA-N UL
501312	M5 Buna-N Seal Kit	2	09123	O-RING, 5.25 ID BUNA-N (COVERS)	5.44 OD X .09 DIA WALL
		1	06856	O-RING, .88 ID BUNA-N; UL (PG)	1.12 OD X .12 DIA WALL
		3	06854	O-RING, 2.88 ID BUNA-N UL (FLGS/STNRS)	3.12 OD X .12 DIA WALL
		1	09201	O-RING, 3.75 ID BUNA-N UL (HC STR INLT FLG)	4.00 OD, -240, UL APVD
501313	M5 Viton Seal Kit	2	09120	O-RING, 5.25 ID VITON (COVERS)	5.44 OD X .09 DIA WALL
		1	06191	O-RING, .88 ID VITON (PG)	1.12 OD X .12 DIA WALL
		3	07025	O-RING, 2.88 ID VITON (FLGS/STNRS)	3.12 OD X .12 DIA WALL
		1	09410	O-RING, 3.75 ID VITON (HC STR INLT FLG)	4.00 OD, -240
501314	M5 Teflon Seal Kit	2	09121	O-RING, 5.25 ID TEFLON (COVERS)	5.44 OD X .09 DIA WALL
		1	06024	O-RING, .88 ID TEFLON (PG)	1.12 OD X .12 DIA WALL
		3	06664	O-RING, 2.88 ID TEFLON (FLGS/STNR)	3.12 OD X .12 DIA WALL

MA7 / M7 / M10

Includes the following items:

Kit Number	Description	Quantity	Part Number	Description 1	Description 2
501315	MA7 / M7 / M10 Buna-N Seal Kit	2	06850	O-RING, 6.25 ID BUNA-N (COVERS)	6.44 OD X .09 DIA WALL
		1	06856	O-RING, .88 ID BUNA-N; UL (PG)	1.12 OD X .12 DIA WALL
		2	06854	O-RING, 2.88 ID BUNA-N UL (FLGS)	3.12 OD X .12 DIA WALL
		1	09201	O-RING, 3.75 ID BUNA-N UL (HC STR INLT FLG)	4.00 OD, -240, UL APVD
501316	M7 / M10 Viton Seal Kit	2	06940	O-RING, 6.25 ID VITON (COVERS)	6.44 OD X .09 DIA WALL
		1	06191	O-RING, .88 ID VITON (PG)	1.12 OD X .12 DIA WALL
		3	07025	O-RING, 2.88 ID VITON (FLGS/STRNRS)	3.12 OD X .12 DIA WALL
		1	09410	O-RING, 3.75 ID VITON (HC STR INLT FLG)	4.00 OD, -240
501317	M7 Teflon Seal Kit	2	07241	6.44 OD	6.44 OD X .09 DIA WALL
		1	06024	1.12 OD X .12 DIA WALL	1.12 OD X .12 DIA WALL
		3	06664	3.12 OD X .12 DIA WALL	3.12 OD X .12 DIA WALL
501314	M5 Teflon Seal Kit	2	09121	O-RING, 5.25 ID TEFLON (COVERS)	5.44 OD X .09 DIA WALL
		1	06024	O-RING, .88 ID TEFLON (PG)	1.12 OD X .12 DIA WALL
		3	06664	O-RING, 2.88 ID TEFLON (FLGS/STNR)	3.12 OD X .12 DIA WALL

MA15 / M15 / M25		Includes the following items:			
Kit Number	Description	Quantity	Part Number	Description 1	Description 2
501318	MA15 / M15 / M25 Buna-N Seal Kit	2	09200	O-RING, 8.50 ID BUNA-N (COVERS)	8.68 OD, -173, UL APVD
		1	06856	O-RING, .88 ID BUNA-N; UL (PG)	1.12 OD X .12 DIA WALL
		2	40871	GASKET, FLANGE; M15, 3", KLINGER	3-1/8" ID, 4-5/8" SQR, 4-3/4" BC
		1	04474	O-RING, 3.62 ID BUNA-N (STD/HC STR)	3.88 OD X .12 DIA WALL
		1	09201	O-RING, 3.75 ID BUNA-N (3X2 RDCR)	4.00 OD, -240, UL APVD
501319	M15 / M25 Buna-N Seal Kit	2	09320	O-RING, 8.50 ID VITON (COVERS)	8.68 OD, -173, .093 WALL
		1	06191	O-RING, .88 ID VITON (PG)	1.12 OD X .12 DIA WALL
		2	40871	GASKET, FLANGE; M15, 3", KLINGER	3-1/8" ID, 4-5/8" SQR, 4-3/4" BC
		1	07653	O-RING, 3.62 ID VITON (STD/HC STR)	3.88 OD X .12 DIA WALL
		1	09410	O-RING, 3.75 ID VITON (3X2 RDCR)	4.00 OD, -240
501320	M15 Teflon Seal Kit	2	09321	O-RING, 8.50 ID TEFLON (COVERS)	8.68 OD, -173, .093 WALL
		1	06024	O-RING, .88 ID TEFLON (PG)	1.12 OD X .12 DIA WALL
		2	40871	GASKET, FLANGE; M15, 3", KLINGER	3-1/8" ID, 4-5/8" SQR, 4-3/4" BC
		1	06878	O-RING, 3.62 ID TEFLON (STD STR)	3.88 OD X .12 DIA WALL

MA7 / M7 / M10		Includes the following items:			
Kit Number	Description	Quantity	Part Number	Description 1	Description 2
501315	MA7 / M7 / M10 Buna-N Seal Kit	2	06850	O-RING, 6.25 ID BUNA-N (COVERS)	6.44 OD X .09 DIA WALL
		1	06856	O-RING, .88 ID BUNA-N; UL (PG)	1.12 OD X .12 DIA WALL
		2	06854	O-RING, 2.88 ID BUNA-N UL (FLGS)	3.12 OD X .12 DIA WALL
		1	09201	O-RING, 3.75 ID BUNA-N UL (HC STR INLT FLG)	4.00 OD, -240, UL APVD
501316	M7 / M10 Viton Seal Kit	2	06940	O-RING, 6.25 ID VITON (COVERS)	6.44 OD X .09 DIA WALL
		1	06191	O-RING, .88 ID VITON (PG)	1.12 OD X .12 DIA WALL
		3	07025	O-RING, 2.88 ID VITON (FLGS/STRNRS)	3.12 OD X .12 DIA WALL
		1	09410	O-RING, 3.75 ID VITON (HC STR INLT FLG)	4.00 OD, -240
501317	M7 Teflon Seal Kit	2	07241	6.44 OD	6.44 OD X .09 DIA WALL
		1	06024	1.12 OD X .12 DIA WALL	1.12 OD X .12 DIA WALL
		3	06664	3.12 OD X .12 DIA WALL	3.12 OD X .12 DIA WALL
501314	M5 Teflon Seal Kit	2	09121	O-RING, 5.25 ID TEFLON (COVERS)	5.44 OD X .09 DIA WALL
		1	06024	O-RING, .88 ID TEFLON (PG)	1.12 OD X .12 DIA WALL
		3	06664	O-RING, 2.88 ID TEFLON (FLGS/STNR)	3.12 OD X .12 DIA WALL



M30 / M40		Includes the following items:			
Kit Number	Description	Quantity	Part Number	Description 1	Description 2
501321	M30 / M40, Buna-N Seal Kit	2	09324	O-RING, 12 ID BUNA-N (COVERS)	12.25 OD X .12 DIA, #2-278
		1	06856	O-RING, .88 ID BUNA-N; UL (PG)	1.12 OD X .12 DIA WALL
		2	49436	GASKET, FLANGE; M30, 4", KLINGER	NITRILE, TYPE 205, 1/16
		1	40704	GASKET, OUTLET; F30 STR, KLINGER	4-5/8" ID, 5-7/8" SQR, 6" BC
		2	46072	GASKET, FLANGE; M30, 4", KLINGER	4-5/8" ID, 5-7/8" SQR, 6" BC
		1	40871	GASKET, FLANGE; M15, 3", KLINGER (AIR CHK)	3-1/8" ID, 4-5/8" SQR, 4-3/4" BC
501322	M30 / M40, Viton Seal Kit	2	09325	O-RING, 12 ID VITON (COVERS)	12.25 OD X .12 DIA, #2-278
		1	06191	O-RING, .88 ID VITON (PG)	1.12 OD X .12 DIA WALL
		2	49436	GASKET, FLANGE; M30, 4", KLINGER	NITRILE, TYPE 205, 1/16
		1	40704	GASKET, OUTLET; F30 STR, KLINGER	4-5/8" ID, 5-7/8" SQR, 6" BC
		2	46072	GASKET, FLANGE; M30, 4", KLINGER	4-5/8" ID, 5-7/8" SQR, 6" BC
		1	40871	GASKET, FLANGE; M15, 3", KLINGER (AIR CHK)	3-1/8" ID, 4-5/8" SQR, 4-3/4" BC
501323	M30, Teflon Seal Kit	2	09326	O-RING, 12 ID TEF/SILIC (COVERS)	12.25 OD X .12 DIA, #2-278
		1	06024	O-RING, .88 ID TEFLON (PG)	1.12 OD X .12 DIA WALL
		2	49436	GASKET, FLANGE; M30, 4", KLINGER	NITRILE, TYPE 205, 1/16
		1	40704	GASKET, OUTLET; F30 STR, KLINGER	4-5/8" ID, 5-7/8" SQR, 6" BC
		2	46072	GASKET, FLANGE; M30, 4", KLINGER	4-5/8" ID, 5-7/8" SQR, 6" BC
		1	40871	GASKET, FLANGE; M15, 3", KLINGER (AIR CHK)	3-1/8" ID, 4-5/8" SQR, 4-3/4" BC

M60		Includes the following items:			
Kit Number	Description	Quantity	Part Number	Description 1	Description 2
501644	M60 Buna-N Seal Kit	2	47018	GASKET, COVER; M60/80, NBR/ALUM	NBR FOAM COATED ALUM
		2	47071	GASKET, ELBOW; M60/80, KLINGER	6" ID, 9" OD, 1/16" THK, 8" BC
		2	49436	GASKET, FLANGE; M30, 4", KLINGER	4-1/4" ID, 5-7/8" SQR, 6" BC
		2	46072	GASKET, FLANGE; M30, 4", KLINGER	4-5/8" ID, 5-7/8" SQR, 6" BC
		1	06856	O-RING, .88 ID BUNA-N; UL (PG)	1.12 OD X .12 DIA WALL
501645	M60 Viton Seal Kit	2	47018	GASKET, COVER; M60/80, NBR/ALUM	NBR FOAM COATED ALUM
		2	47071	GASKET, ELBOW; M60/80, KLINGER	6" ID, 9" OD, 1/16" THK, 8" BC
		2	49436	GASKET, FLANGE; M30, 4", KLINGER	4-1/4" ID, 5-7/8" SQR, 6" BC
		2	46072	GASKET, FLANGE; M30, 4", KLINGER	4-5/8" ID, 5-7/8" SQR, 6" BC
		1	06191	O-RING, .88 ID VITON (PG)	1.12 OD X .12 DIA WALL

M80		Includes the following items:			
Kit Number	Description	Quantity	Part Number	Description 1	Description 2
501646	M80 Buna-N Seal Kit	2	47018	GASKET, COVER; M60/80, NBR/ALUM	NBR FOAM COATED ALUM
		2	47071	GASKET, ELBOW; M60/80, KLINGER	6" ID, 9" OD, 1/16" THK, 8" BC
		1	06856	O-RING, .88 ID BUNA-N; UL (PG)	1.12 OD X .12 DIA WALL
501647	M80 Viton Seal Kit	2	47018	GASKET, COVER; M60/80, NBR/ALUM	NBR FOAM COATED ALUM
		2	47071	GASKET, ELBOW; M60/80, KLINGER	6" ID, 9" OD, 1/16" THK, 8" BC
		1	06191	O-RING, .88 ID VITON (PG)	1.12 OD X .12 DIA WALL



MA4 - M25

Class: 1,2,3,4,10,12,16

Includes the following items:

Item No.	Description	Quantity	Part Number	Description 1	Description 2	User Ref.
501664	Drive Shaft Kit, Adj; MA4-M25	1	48287	Shaft, .25 Hex; Adj Drv, Pltd Steel	M5/7/15 Std & ROF	382
		2	41786	Bushing, Adj Drv Shaft		310
		1	02188	Retaining Ring, "E"; .250 Shaft	Xtrnl "E", Pltd Stl	574
		1	48208	Retainer, Bushing; Adj Drv Shaft		375
		1	40122	Gear, Face; 24 Tooth Delrin, 1:1	Use w/24 Tooth Pinion Gear	336
		1	40818	Gear, Face; 24 Tooth Delrin, 2:1	Use w/12 Tooth Pinion Gear	336

M30 / M40

Class: 1,2,3,4,16

Includes the following items:

Item No.	Description	Quantity	Part Number	Description 1	Description 2	User Ref.
501665	Drive Shaft Kit, Adj; M30/40	1	48540	Shaft, .25 Hex; Adj Drv, Pltd Steel	M30 Std & ROF	382
		2	41786	Bushing, Adj Drv Shaft		310
		1	02188	Retaining Ring, "E"; .250 Shaft	Xtrnl "E", Pltd Stl	574
		1	48208	Retainer, Bushing; Adj Drv Shaft		375
		1	40122	Gear, Face; 24 Tooth Delrin, 1:1	Use w/24 Tooth Pinion Gear	336
		1	40818	Gear, Face; 24 Tooth Delrin, 2:1	Use w/12 Tooth Pinion Gear	336

M60 / M80

Class: 1 & 2

Includes the following items:

Kit Number	Description	Quantity	Part Number	Description 1	Description 2	User Ref.
501666	Drive Shaft Kit, Adj; M60/80	1	48538	Shaft, .25 Hex; Adj Drv, 303 SS	Use w/48580 Series Ctr Adptr	382
		1	47459	Bushing, Adj Drv Shaft		310
		1	47019	Spring, Bushing; Adj Drv Shaft	Retention	575
		2	V1025	Veeder/Root-Parts (Flat Washer)		756
		1	02188	Retaining Ring, "E"; .250 Shaft	Xtrnl "E", Pltd Stl	574
		1	04455	Retaining Ring, "E"; .187 Shaft	Xtrnl "E", Pltd Stl	534
		2	06845	Screw, #10-24 x .375	Fillister Hd, 316 SS	603
		1	40122	Gear, Face; 24 Tooth Delrin, 1:1	Use w/24 Tooth Pinion Gear	336
		1	40818	Gear, Face; 24 Tooth Delrin, 2:1	Use w/12 Tooth Pinion Gear	336

M5 / M7

Class: 8 & 14

Includes the following items:

Item No.	Description	Quantity	Part Number	Description 1	Description 2	User Ref.
501667	Drive Shaft Kit, Adj; M5-M7	1	48587	Shaft Assy, .25 Hex; Adj Drv, SS/Tef	M5/7/15 Hi-Temp	382
		1	06150	Retaining Ring, "E"; .250 Shaft	Xtrnl "E", SS	574
		1	48208	Retainer, Bushing; Adj Drv Shaft		375
		1	42909	Gear, Face; 24 Tooth, 316 SS, 1:1	Use w/24 Tooth Pinion Gear	336
		1	42907	Gear, Face; 24 Tooth, 316 SS, 2:1	Use w/12 Tooth Pinion Gear	336

M15

Class: 14

Includes the following items:

Item No.	Description	Quantity	Part Number	Description 1	Description 2	User Ref.
501668	Drive Shaft Kit, Adj; M15	1	48587	Shaft Assy, .25 Hex; Adj Drv, SS/Tef	M5/7/15 Hi-Temp	382
		1	06150	Retaining Ring, "E"; .250 Shaft	Xtrnl "E", SS	574
		1	48208	Retainer, Bushing; Adj Drv Shaft		375
		1	42909	Gear, Face; 24 Tooth, 316 SS, 1:1	Use w/24 Tooth Pinion Gear	336
		1	42907	Gear, Face; 24 Tooth, 316 SS, 2:1	Use w/12 Tooth Pinion Gear	336

M30

Class: 14

Includes the following items:

Kit Number	Description	Quantity	Part Number	Description 1	Description 2	User Ref.
501669	Drive Shaft Kit, Adj; M30	1	48540	Shaft, .25 Hex; Adj Drv, Pltd Steel	M30 Std & ROF	382
		2	41786	Bushing, Adj Drv Shaft		310
		1	02188	Retaining Ring, "E"; .250 Shaft	Xtrnl "E", Pltd Stl	574
		1	48208	Retainer, Bushing; Adj Drv Shaft		375
		1	42909	Gear, Face; 24 Tooth, 316 SS, 1:1	Use w/24 Tooth Pinion Gear	336
		1	42907	Gear, Face; 24 Tooth, 316 SS, 2:1	Use w/12 Tooth Pinion Gear	336

M60

Class: 14

Includes the following items:

Kit Number	Description	Quantity	Part Number	Description 1	Description 2	User Ref.
501670	Drive Shaft Kit, Adj; M60	1	48538	Shaft, .25 Hex; Adj Drv, 303 SS	Use w/48580 Series Ctr Adptr	382
		1	47459	Bushing, Adj Drv Shaft		310
		1	47019	Spring, Bushing; Adj Drv Shaft	Retention	575
		2	V1025	Veeder/Root-Parts (Flat Washer)		756
		1	02188	Retaining Ring, "E"; .250 Shaft	Xtrnl "E", Pltd Stl	574
		1	04455	Retaining Ring, "E"; .187 Shaft	Xtrnl "E", Pltd Stl	534
		2	06845	Screw, #10-24 x .375	Fillister Hd, 316 SS	603
		1	42909	Gear, Face; 24 Tooth, 316 SS, 1:1	Use w/24 Tooth Pinion Gear	336
		1	42907	Gear, Face; 24 Tooth, 316 SS, 2:1	Use w/12 Tooth Pinion Gear	336

MS/MsAA7, MSMS/MsAA30 / MSMS/MsAA40

Class: 1,2,10,16

Includes the following items:

Kit Number	Description	Quantity	Part Number	Description 1	Description 2	User Ref.
501656	Drive Shaft Kit, Adj; MS7, MS30/40	1	48538	Shaft, .25 Hex; Adj Drv, 303 SS	Use w/48580 Series Ctr Adptr	382
		1	47459	Bushing, Adj Drv Shaft		310
		1	47019	Spring, Bushing; Adj Drv Shaft	Retention	575
		2	V1025	Veeder/Root-Parts (Flat Washer)		756
		1	02188	Retaining Ring, "E"; .250 Shaft	Xtrnl "E", Pltd Stl	574
		1	04455	Retaining Ring, "E"; .187 Shaft	Xtrnl "E", Pltd Stl	534
		2	06845	Screw, #10-24 x .375	Fillister Hd, 316 SS	603
		1	40122	Gear, Face; 24 Tooth Delrin, 1:1	Use w/24 Tooth Pinion Gear	336
		1	40818	Gear, Face; 24 Tooth Delrin, 2:1	Use w/12 Tooth Pinion Gear	336



MS/MSAA75, MS/MSAA120

Class: 1,2,10,16

Includes the following items:

Item No.	Description	Quantity	Part Number	Description 1	Description 2	User Ref.
501657	Drive Shaft Kit, Adj; MS75-120	1	47246	Shaft, .25 Hex; Adj Drv, Lower, 303 SS	Use w/48579 Series Ctr Adptr	382
		1	48539	Shaft, .25 Hex; Adj Drv, Upper, 303 SS	Use w/48579 Series Ctr Adptr	383
		1	47250	Coupler, Shaft; Adj Drv, Alum	Fits .187 Dia	308
		2	06946	Pin, Cotter; .062 Dia.	.750 Lg, 18-8 SS	550
		1	47459	Bushing, Adj Drv Shaft		310
		1	47019	Spring, Bushing; Adj Drv Shaft	Retention	575
		2	V1025	Veeder/Root-Parts (Flat Washer)		756
		1	02188	Retaining Ring, "E"; .250 Shaft	Xtrnl "E", Pltd Stl	574
		1	04455	Retaining Ring, "E"; .187 Shaft	Xtrnl "E", Pltd Stl	534
		4	06845	Screw, #10-24 x .375	Fillister Hd, 316 SS	603
		1	40122	Gear, Face; 24 Tooth Delrin, 1:1	Use w/24 Tooth Pinion Gear	336
		1	40818	Gear, Face; 24 Tooth Delrin, 2:1	Use w/12 Tooth Pinion Gear	336

MS/MSAA7, MS/MSAA30, MS/MSAA40

Class: 14

Includes the following items:

Kit Number	Description	Quantity	Part Number	Description 1	Description 2	User Ref.
501658	Drive Shaft Kit, Adj; MS7, MS30/40	1	48538	Shaft, .25 Hex; Adj Drv, 303 SS	Use w/48580 Series Ctr Adptr	382
		1	47459	Bushing, Adj Drv Shaft		310
		1	47019	Spring, Bushing; Adj Drv Shaft	Retention	575
		2	V1025	Veeder/Root-Parts (Flat Washer)		756
		1	02188	Retaining Ring, "E"; .250 Shaft	Xtrnl "E", Pltd Stl	574
		1	04455	Retaining Ring, "E"; .187 Shaft	Xtrnl "E", Pltd Stl	534
		2	06845	Screw, #10-24 x .375	Fillister Hd, 316 SS	603
		1	42909	Gear, Face; 24 Tooth, 316 SS, 1:1	Use w/24 Tooth Pinion Gear	336
		1	42907	Gear, Face; 24 Tooth, 316 SS, 2:1	Use w/12 Tooth Pinion Gear	336

MS/MSAA75, MS/MSAA120

Class: 14

Includes the following items:

Kit Number	Description	Quantity	Part Number	Description 1	Description 2	User Ref.
501659	Drive Shaft Kit, Adj; MS75-120	1	47246	Shaft, .25 Hex; Adj Drv, Lower, 303 SS	Use w/48579 Series Ctr Adptr	382
		1	48539	Shaft, .25 Hex; Adj Drv, Upper, 303 SS	Use w/48579 Series Ctr Adptr	383
		1	47250	Coupler, Shaft; Adj Drv, Alum	Fits .187 Dia	308
		2	06946	Pin, Cotter; .062 Dia.	.750 Lg, 18-8 SS	550
		1	47459	Bushing, Adj Drv Shaft		310
		1	47019	Spring, Bushing; Adj Drv Shaft	Retention	575
		2	V1025	Veeder/Root-Parts (Flat Washer)		756
		1	02188	Retaining Ring, "E"; .250 Shaft	Xtrnl "E", Pltd Stl	574
		1	04455	Retaining Ring, "E"; .187 Shaft	Xtrnl "E", Pltd Stl	534
		4	06845	Screw, #10-24 x .375	Fillister Hd, 316 SS	603
		1	42909	Gear, Face; 24 Tooth, 316 SS, 1:1	Use w/24 Tooth Pinion Gear	336
		1	42907	Gear, Face; 24 Tooth, 316 SS, 2:1	Use w/12 Tooth Pinion Gear	336



M5-M25, MA4-MA15, MS/MSAA7/15

Includes the following items:					
Item No.	Description	Quantity	Part Number	Description 1	User Ref.
501661	Bearing Plate Hardware Kit, Aluminum Element	12	09079	Screw, #10-24 x .625, Hx Hd, SEMS, Taptite, 304 SS	382
		1	48275	Screw, Shoulder; M5 Output Gear, #10-24 Thd, Hex Head, 316 SS	574

M30/40, MS/MSAA30/40

Includes the following items:					
Kit Number	Description	Quantity	Part Number	Description 1	User Ref.
501662	Bearing Plate Hardware Kit, Aluminum Element	16	09079	Screw, #10-24 x .625, Hx Hd, SEMS, Taptite, 304 SS	611

M60/80, MS/MSAA75/120

Includes the following items:					
Kit Number	Description	Quantity	Part Number	Description 1	User Ref.
501663	Bearing Plate Hardware Kit, Aluminum Element	26	09097	Screw, .312-18 x 1.00, Hx Hd, SEMS, Taptite, 304 SS	611
		1	07649	Screw, Shoulder; M60 Output Gear, 1/4"-20 Thd, Sckt Hd, 18-8 SS	635

Air Eliminator Cross Reference

All air eliminators are now anodized. By doing so we have consolidated part numbers as follows:

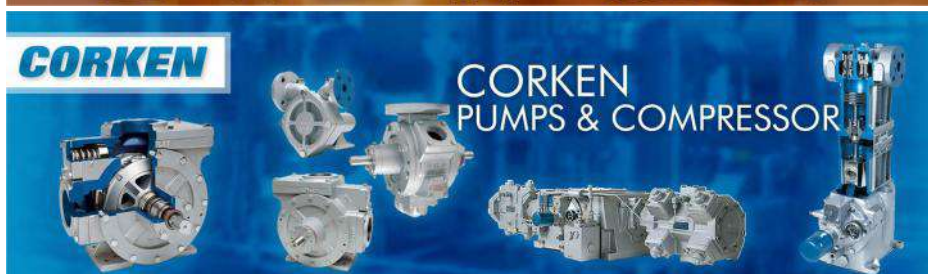
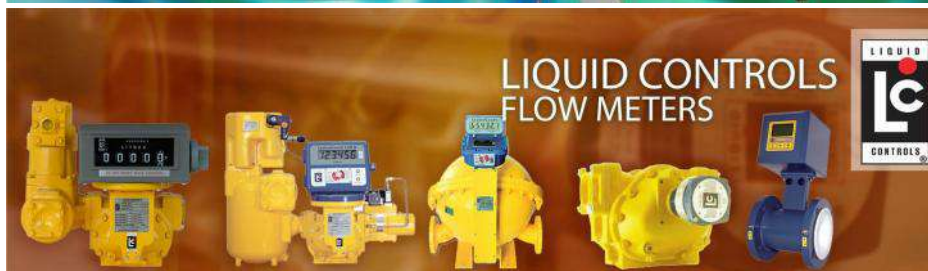
Previous part number	Replacement part number	Previous part number	Replacement part number	Previous part number	Replacement part number
A8181	A8252 obsoleted	A8227	A8227	A8183	Non-saleable, No replacement
A8181A	A8252 obsoleted	A8227A	A8227	A8185	
A8182A	A8182 obsoleted	A8228	A8228	A8186	
A8184A	A8253	A8228A	A8228	A8190	
A8189	A8189 obsoleted	A8253	A8253	A8192	
A8189A	A8189 obsoleted	A8301	A8981	A8193	
A8196A	A8196	A8301A	A8981	A8195	
A8197A	A8197	A8340	A8340	A8203	
A8200A	A8200	A8340A	A8340	A8217	
A8204A	A8204 obsoleted	A8341	A8341	A8223	
A8205	A8205 obsoleted	A8341A	A8341	A8303	
A8205A	A8205 obsoleted	A8345A	A8345 obsoleted	A8345A	
A8206A	A8206 obsoleted	A8981	A8981		
A8207A	A8207 obsoleted	A8981A	A8981		
A8208A	A8208				
A8210A	A8180				
A8211A	A8211 obsoleted				
A8212	A8212 obsoleted				
A8212A	A8212 obsoleted				
A8213A	A8213 obsoleted				
A8220	A8220				
A8220A	A8220				
A8221A	A8221 obsoleted				
A8222A	A8222 obsoleted				

Your Distributor For This Product:



Ali Yaqoob Trading Co. L.L.C

Authorized Distributors of Petroleum, Marine & Industrial Equipment



P.O. Box 11682, Dubai, U.A.E.
Tel: +9714-3330105; +9714-3332091
Fax: +9714-3330104
E-mail: sales@aliyaqoob.com
www.aliyaqoob.com